


BERRYALLOC®

LAMINATE



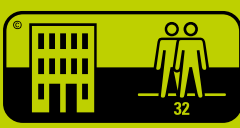
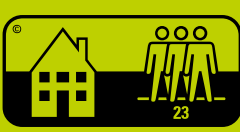
 Made in **Belgium**

Naturals Pro

| | | | | |
|-----------------------|----------------------------|-----------------------|--------------------------------------|------------------------------------|
| 8 mm thick | 1288 x 190 mm | 4 bevels | Duo Loc | Class 32 AC4 |
| Wood Structure | Real Wood Structure | Deep Structure | Lifetime Warranty Residential | 5 years Warranty Commercial |



2,20 m² 1288 L x 190 W x 8 TH (mm)
23,71 ft² 50,71 L x 7,48 W x 0,31 TH (inch)



EN14041
CE
DOP: 170-DPLA18-1
NB:1161
18
BerryAlloc nv
Industrielaan 100, B-8930 Menen
Belgium
Laminate floor covering
EN13329

ÉMISSIONS DANS L'AIR INTÉRIEUR*

A+

A+ A B C

*Information sur le niveau d'émission de substances volatiles dans l'air intérieur, présentant un risque de toxicité par inhalation, sur une échelle de classe allant de A+ (très faibles émissions) à C (fortes émissions).



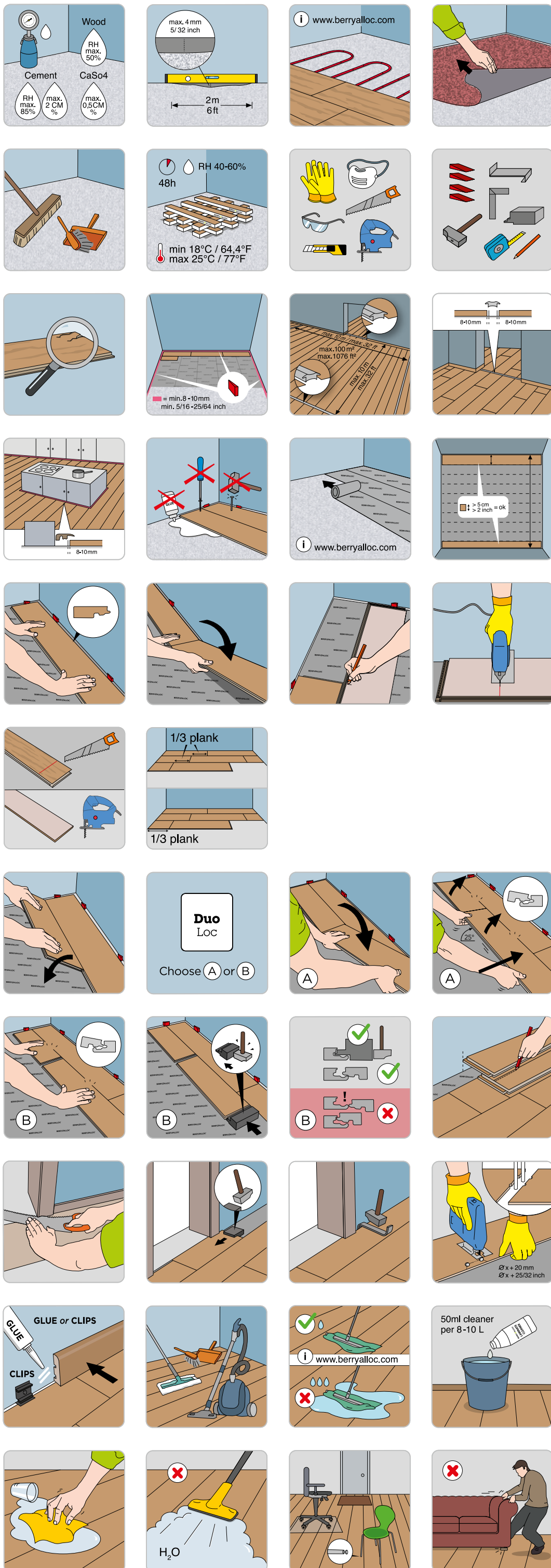
QB26
Certificat U₃P₃E₁C₂
Certificat N° ST18-051
<http://evaluation.cstb.fr>

WWW.BERRYALLOC.COM

BERRYALLOC®

LAMINATE

Naturals Pro

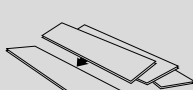


Made in **Belgium**

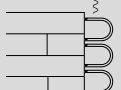
LOOKING FOR MORE INFO?



UNDERLAYS



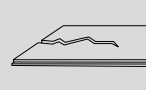
INSTALLATION



FLOOR HEATING



CARE & MAINTENANCE



WARRANTY



VISIT OUR WEBSITE
WWW.BERRYALLOC.COM



Discover our products



Beaulieu International Group